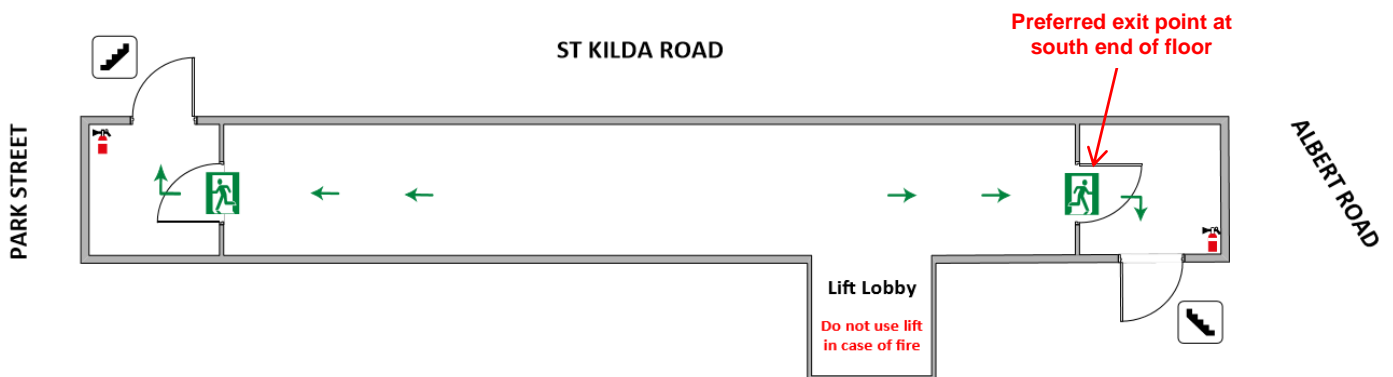


Standard Fire Orders

1. Assist any person in immediate danger - if safe to do so
2. Close the door
3. Call the Fire Brigade on 000
4. Attack the fire if safe to do so
5. Evacuate to assembly area (use stairs – not lifts)
6. Remain at assembly area and ensure everyone for your apartment and level is accounted for where possible

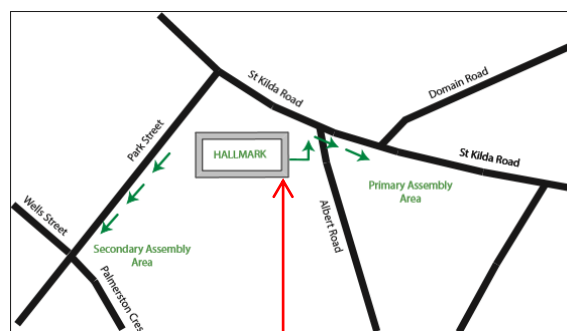
* When responding to the Standard Fire Orders, make plenty of noise to warn others on your floor as you move away from the danger **and** keep low to avoid breathing toxic fumes

Floor Evacuation Diagram



Hallmark Assembly Areas

- Use the building stairs to move to an Assembly Area
- Note preferred exit point at south end of the floor
- On arrival at Assembly Area await further instructions.



Preferred exit point at south end of floor